


SUMS⁺ SmartPipe[®] Data Portal

SmartPipe[®] is a fully managed hydrant access service with patented in-built technology. The Portable Standpipe technology takes standpipe management to the next level.

**Improved water usage visibility
to drive performance**



The screenshot shows a login interface for the SmartPipe Data Portal. At the top, it says "skilltech SMARTPIPE™". Below this are two input fields: "Username" and "Password". A green "Login" button is positioned below the password field. Under the "Login" button, there are two links: "Remember Me" (with a checkbox) and "Forgot Password?". At the bottom right, it says "Powered by: SUMS⁺".

Please log in!



SUMS Data Portal Benefits

- Produce daily updates and automate alerts
- Get access to accurate water usage statistics
- Make fast data driven decisions
- Limit anomalies and usage outside boundaries
- Create savings and increase revenue
- Manage all hydrants usage in one place
- Create event monitoring reports with ease
- Compare meters across sites
- Fast and accurate invoicing
- Track near real-time water usage

SUMS⁺



Advanced Data Logging

The advanced SUMS data logging technology used in the Smartpipe[®] is used to monitor water usage for accurate data driven reporting and decision making.

- SUMS XG Data Logger is a compact, multi-channel monitoring device with GPS tracking that can be attached to any utility meter with a pulse output.
- Powered by long-life (5-8 years) 7.2v lithium battery cell.
- SUMS XG Data Logger can be installed in almost any environment.
- Sturdy enclosure of the XG Data Logger is built to withstand the harsh Australian conditions.
- Data is sampled in 15 minute intervals and uploaded and saved to the SUMS Portal for further analysis and use.

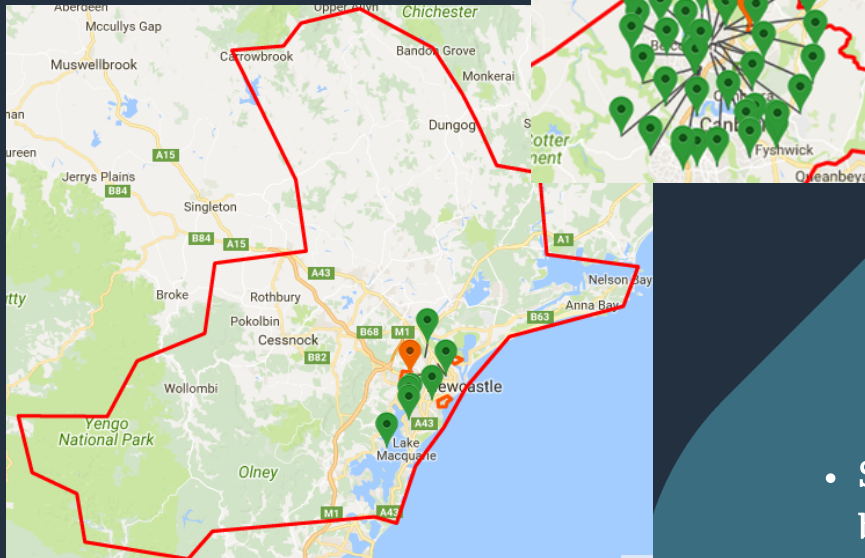
SUMS⁺



GPS Mapping

100% Transparency

Use GPS Mapping to find hydrant location and identify where and which hydrant was used. Compare data from different sites to understand usage patterns and automate alerts to prevent usage outside boundaries.



SUMS+

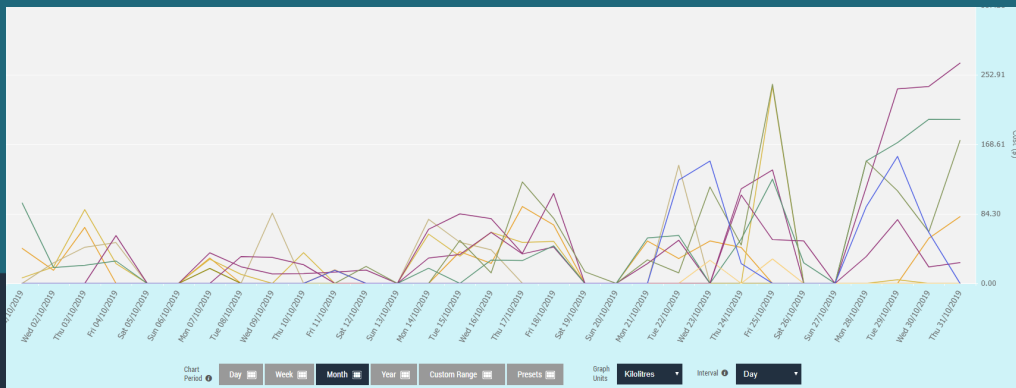
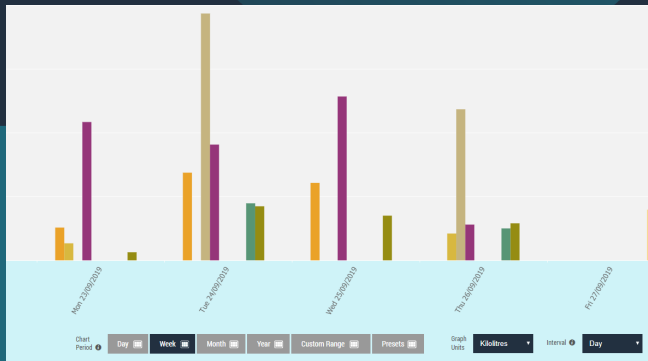


- Trace how much water was used in a specific location at any point of time and view the site on street view maps
- Geo-fencing places a virtual perimeter in a real world geographical area. If the SmartPipe is used outside of this area, an alert can be triggered.
- Save and share the accurate usage location information.
- See every extraction point location on a map and identify where and when the SmartPipe® was used .
- Set operational boundaries and exclusion zones based on your business needs

Statistics

Be Resource Smart

Use the sophisticated suite of Data Portal statistical functions to present, share and report water data.



SUMS⁺

- ✚ Water consumption is logged in near real time with the date, time, and location
- ✚ Create detailed data tables
- ✚ Draw informative charts with maps for advanced business intelligence and reporting
- ✚ Use data for all business needs from reporting to billing and utilize the full power of the SmartPipe[®]
- ✚ Data Portal built in statistics tool provides you a snapshot of:

- Total water usage
- Average water usage / Smartpipe[®] / day
- Water cost / KL
- Total cost of water used



Alerts

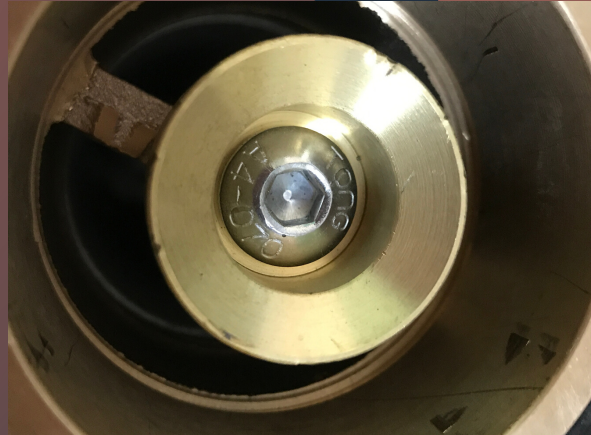
Automate all usage monitoring

Use automated SMS / email alerts to detect specific events and problems fast.

- ✚ Set up automatic alerts for high or/and low usage. Let the Data Portal do the monitoring for you.
- ✚ Receive alerts with an SMS or email.
- ✚ Unlimited alerts for ALL your needs.

SUMS⁺

- Configure the Portal to automatically detect usage outside of the geo-fence
- Use flow alert to tell when usage exceeds a set threshold
- Use accumulated alert to show when set volume is exceeded in a given time.
- Set an alert to inform when the SmartPipe[®] meter has not reported to the server for over 24h



More information

SUMS⁺

Smartpipe[®] Data Portal and Smart Utility Business Solutions

Contact:

SUMS Group
www.sums.com.au
P. 1300 368 603
6/20 Narabang Way
Belrose NSW 2085

